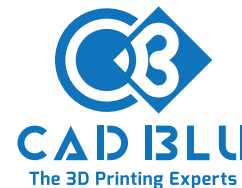


# ProJet® MJP 2500 Plus

High quality, speed and ease-of-use made accessible



Accessing high fidelity, functional plastic or elastomeric prototypes has never been faster or easier, with up to 3x higher 3D printing speeds than similar class printers and finished part delivery up to 4x faster with 3D Systems MJP EasyClean System.

## PROFESSIONAL PARTS QUALITY

Print precision rigid and elastomeric parts with true-to-CAD accuracy, superior surface finish and high quality edge fidelity for true functional testing.

## SPEED

Step up from desktop 3D printing to 24/7 usability and get more parts sooner to design better products faster.

The ProJet MJP 2500 Series' industrial print head and optimized print parameters deliver up to 3 times faster print speeds than similar class printers for better efficiencies and higher productivity.

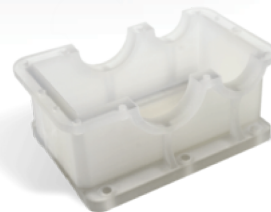
## SIMPLICITY

Driven by the powerful 3D Sprint™ print client software, ProJet MJP 2500 printers deliver high fidelity functional parts with speed, ease and low operational costs.

The new MJP EasyClean System is an incredibly simple and hands-free way to remove supports from MJP parts in under 30 minutes without manual labor.

## MATERIALS

With a variety of VisiJet material combinations available, you're sure to find the MultiJet 3D printing material that meets the unique needs of your rapid prototyping project.



### New York

212.481.8700  
37 W 28th St., 9th Floor  
New York, NY 10001 USA

### California

818.303.1766  
64 West Bellevue Drive  
Pasadena, CA 91105

### Colorado

970.314.9772  
562 W. Crete Suite 105  
Grand Junction, CO 81505

### Massachusetts

978.710.0002  
491 Dutton Street  
Lowell, MA 01854

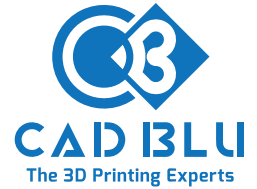
### Oregon

971.808.0050  
4800 SW Macadam Ave,  
Suite 320,  
Portland, OR 97239

[www.cadblu.com](http://www.cadblu.com) | [info@cadblu.com](mailto:info@cadblu.com)

Warranty/Disclaimer: The performance characteristics of these products may vary according to product application, operating conditions, material, combined with end use. CAD BLU makes no warranties of any type, express or implied, including, but not limited to, the warranties of the merchantability or fitness for a particular use. ©2018 by CAD BLU, Inc. All rights reserved. Specifications subject to change without notice. ProJet and the 3D Systems logo are registered trademarks of 3D Systems, Inc.

# ProJet® MJP 2500 Plus



|  |   |
|--|---|
| Printing Mode  | HD - High Definition  |
| Net Build Volume (xyz)*  | 11.6 x 8.3 x 5.6 in (295 x 211 x 142 mm)  |
| Resolution (xyz)   | 800 x 900 x 790 DPI, 32 µ layers  |
| Accuracy (typical)   | ±0.004 in per in (±0.1016 mm per 25.4 mm) of part dimension.<br>Accuracy may vary depending on build parameters, part geometry and size, part orientation, and post-processing.   |
| Build Materials  | VisiJet M2 ENT – Elastomeric Natural   VisiJet M2 RCL – Rigid Clear   VisiJet Armor (M2G-CL)<br>VisiJet M2 EBK – Elastomeric Black   M2R-TN – Rigid Tan   VisiJet M2R-CL   VisiJet M2R-WT   VisiJet M2R-GRY (MJP)   |
| Support Material   | VisiJet M2 SUP  |
| Material Packaging<br>Build Materials<br>Support Material      | In clean 1.5 kg bottles (printer holds up to 2 build materials bottles with auto-switching)<br>In clean 1.4 kg bottles (printer holds up to 2 support material bottles with auto-switching)   |
| Electrical   | 100-127 VAC, 50/60 Hz, single-phase, 15A. Single C14 receptacle<br>200-240 VAC, 50 Hz, single-phase, 10A. Single C14 receptacle   |
| Dimensions (WxDxH)<br>3D Printer Crated<br>3D Printer Uncrated | 55 x 36.5 x 51.7 in (1397 x 927 x 1314 mm)<br>44.1 x 29.1 x 42.1 in (1120 x 740 x 1070 mm)  |
| Weight<br>3D Printer Crated<br>3D Printer Uncrated             | 716 lb (325 kg)<br>465 lb (211 kg)  |
| 3DSPRINT Software  | Easy build job set-up, submission and job queue management; Automatic part placement and build optimization tools;<br>Part stacking and nesting capability; Extensive part editing tools; Automatic support generation; Job statistics reporting tools  |
| Email Notice Capability  | Yes   |
| Internal Hard Drive Capacity                                   | 500 Gb minimum  |
| Connectivity   | Network ready with 10/100/1000 BaseT Ethernet interface, USB port   |
| Client Hardware Recommendation                                 | <ul style="list-style-type: none"><li>• 3 GHz multiple core processor (2 GHz Intel® or AMD® processor mini) with 8 GB RAM or more (4 GB mini)</li><li>• OpenGL 3.2 and GLSL 1.50 support (OpenGL 2.1 and GLSL 1.20 mini), 1 GB video RAM or more, 1280 x 1024 (1280 x 960 mini) screen resolution or higher</li><li>• SSD or 10,000 RPM hard disk drive (30 GB of available hard-disk space for cache mini)</li><li>• Google Chrome or Internet Explorer 11 (Internet Explorer 9 mini)</li><li>• Other: 3 button mouse with scroll, keyboard, Microsoft .NET Framework 4.5 installed with application</li></ul> |
| Client Operating System  | Windows® 7, Windows 8 or Windows 8.1 (Service Pack)   |
| Input Data File Formats Supported                              | STL, CTL, OBJ, PLY, ZPR, ZBD, AMF, WRL, 3DS, FBX  |
| Post Processing  | MJP EasyClean System for easy removal of eco-friendly wax supports  |
| Operating Temperature Range                                    | 64-82 °F (18-28 °C), reduced print speed at > 77 °F (25 °C)   |
| Operating Humidity   | 30-70 % Relative Humidity   |
| Noise  | < 65 dBa estimated (at medium fan setting)  |
| 5-Year Printhead Warranty                                      | Optional  |
| Certifications   | CE  |